

Prisma 15/25 Surface Horizontal



Quiet-running multi-stage centrifugal pumps

Applications

To work with clean water in domestic applications, irrigation, and hydropneumatic sets. Self-priming to 2 m.

Materials

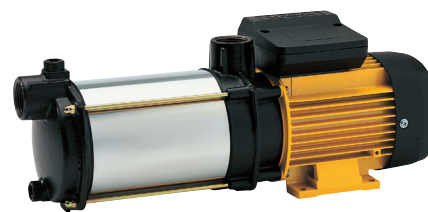
Pump body and impellers in AISI 304 stainless steel.
Motor shaft in AISI 420 stainless steel.
Diffusers in technopolymer.
Suction and discharge mountings in cast iron.
Mechanical seal in graphite and alumine.
Gaskets in EPDM and NBR.
Motor casing in aluminium.

Motor

Asynchronous, 2 poles.
IP 44 protection.
Class F insulation.
Continuous operation.
Single-phase version up to 1.5 HP with built-in thermal protection.
Efficiency IE2.

Limitations

Maximum liquid temperature: 40 °C.



Hydraulic performance table

Model	I [A]			P1 [kW]		P2		c	l/min	m³/h							1~230 V (model M)	3~400 V (model T)		
	1~230 V	3~230 V	3~400 V	1~230 V	3~400 V	[kW]	[HP]			[µF]	0.6	1.2	1.8	2.1	2.4	3.0	3.6	3.9	Code	Code
	Prisma 15 3	2.74	2.1	1.21	0.61	0.61	0.37			0.5	12	mwc	32	30	26	24	22	17	10.5	7
Prisma 15 4	3.53	2.3	1.3	0.79	0.7	0.55	0.75	12	43	39	35		32	27	21.5	14	9	97150	97148	
Prisma 15 5	4.13	3.3	1.9	0.95	0.95	0.75	1.0	12	51	47	42		38	34	25	17	12	97159	97157	

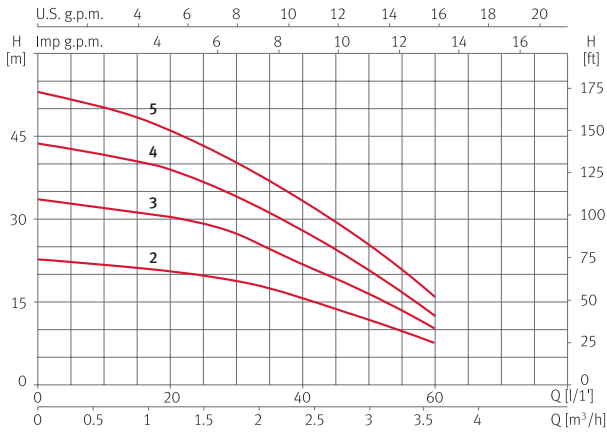
Model	I [A]			P1 [kW]		P2		c	l/min	m³/h							1~230 V (model M)	3~400 V (model T)		
	1~230 V	3~230 V	3~400 V	1~230 V	3~400 V	[kW]	[HP]			[µF]	0.9	1.8	2.7	3.6	4.5	5.4	6.3	7.2	Code	Code
	Prisma 25 3	5.5	3.5	2	1.2	1	0.75			1	16	mwc	33	32	30.5	28	26	22	17	12
Prisma 25 4	6.8	4.3	2.5	1.5	1.4	0.92	1.25	16	43	42	40		37	33	28	22	15	97188	97185	
Prisma 25 5	7.4	5.2	3	1.7	1.7	1.1	1.5	25	56	55	52.5		48	43	37	29	20	97196	97194	
Prisma 25 6	9.8	6.7	3.9	2.2	2	1.5	2	30	72	68	65		58	50	40	32	24	97203	97202	

Prisma 15/25 Surface Horizontal

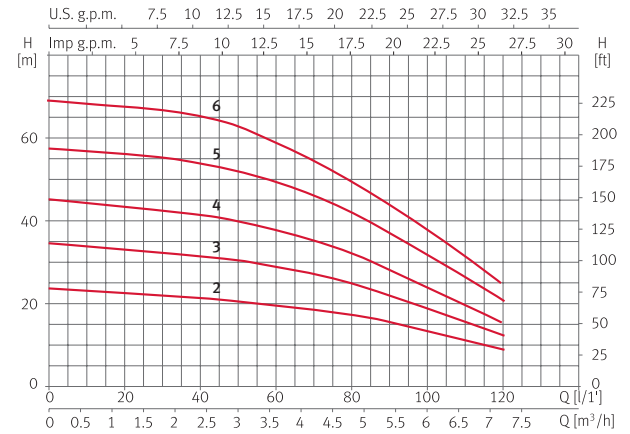


Performance curves at 2900 rpm

Prisma 15



Prisma 25

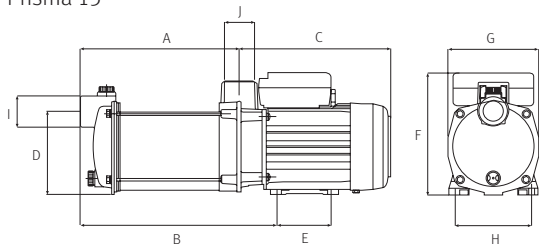


Dimensions and weights

Prisma 15

Model	A	B	C	D	E	F	G	H	I	J	Kg
Prisma 15 2	163	213	202	110	74	162	121	102	1"	1"	8.3
Prisma 15 3	187	237	202	110	74	162	121	102	1"	1"	9.2
Prisma 15 4	211	261	202	110	74	162	121	102	1"	1"	10
Prisma 15 5	235	285	202	110	74	162	121	102	1"	1"	11

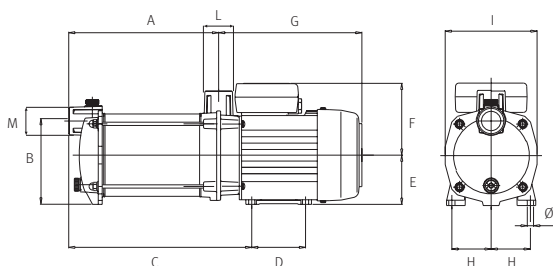
Prisma 15



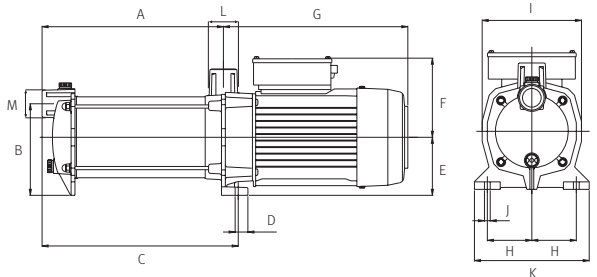
Prisma 25

Model	A	B	C	D	E	F	G	H	I	J	K	L	M	Kg
Prisma 25 3	202	127	252.5	82	75	109.5	218	59	138	8		1"	1"	13.5
Prisma 25 4	228.5	127	279	82	75	109.5	218	59	138	8		1"	1"	14.6
Prisma 25 5	255	127	328	82	75	109.5	240.5	59	138	8		1"	1"	17.2
Prisma 25 6	281	142	304	20	89.5	122	286	69	154	10	178	1"	1"	20

Prisma 25 3/4/5



Prisma 25 6



*Service kits are available on request